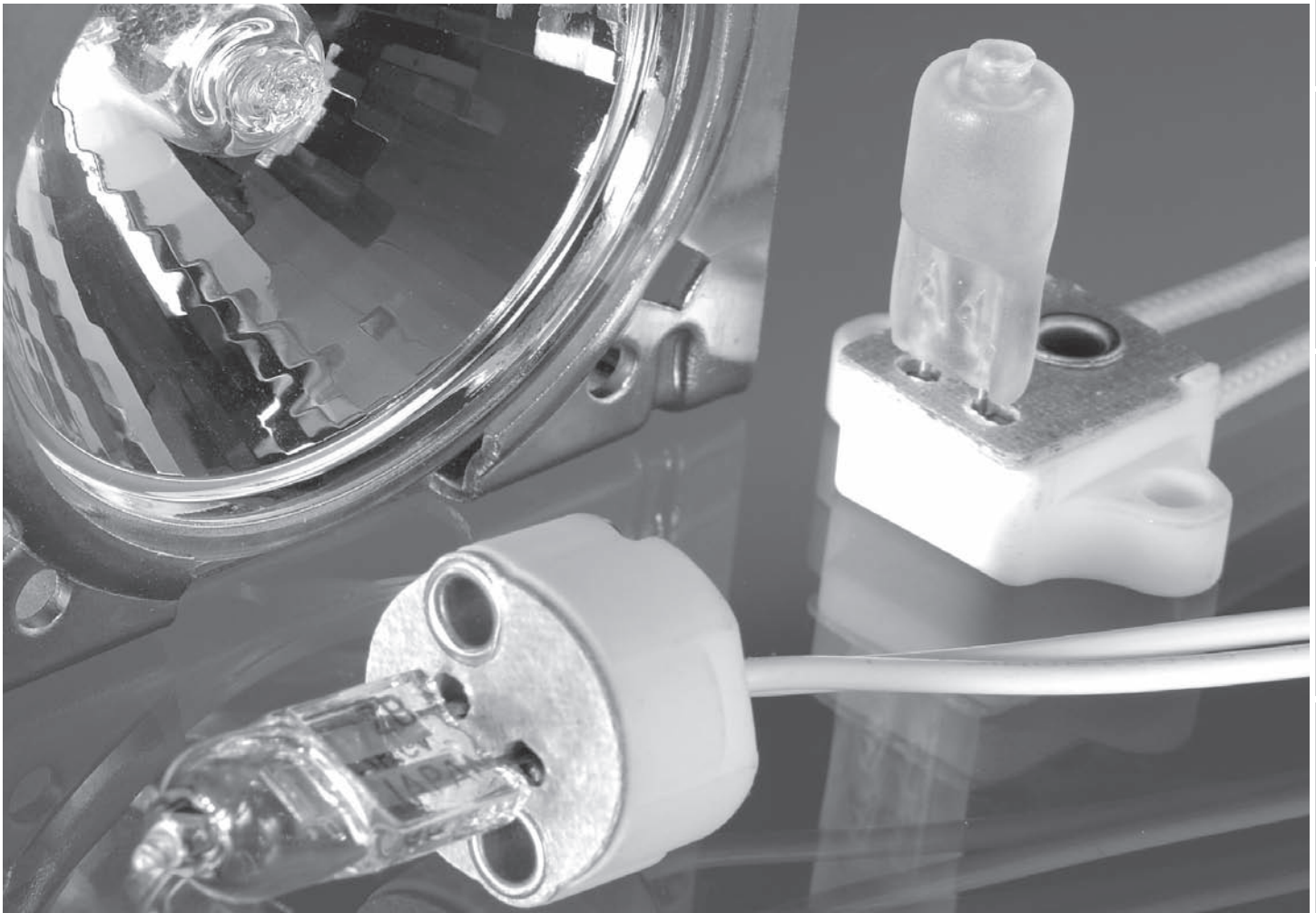


L A M P H O L D E R S



In order for any system to operate at maximum efficiency all of the parts must be in good working order and reliable. International Light Technologies offers a range of lampholders to complement the lamps we offer.

Lampholders are an essential part of a lighting system and the wrong choice can lead to lost power and lamps not working effectively. All lamps are listed with a rated voltage and wattage and it is essential the means provided to get the power to the lamp from the power source is a good and effective one. Under powering or over powering a lamp can have a large impact on the life of the lamp as well as it's spectral output.

In this section you will see some of the more common lampholders used with our lamps along with readily available options that we stock for immediate delivery. These options include different wire lengths and threaded mounting holes.

The lampholders maximum ratings are listed so you will know if your lamp can be safely installed in each lampholder. Please note that the maximum temperatures listed apply both to the wire used and also the ceramic upon which the lamp sits. The temperature at the ceramic will be much higher than along the wire.

If the lampholder you are looking for is not listed in this section, please contact our technical support department and an engineer will be able to assist you. Basic changes such as wire length or type or complicated changes such as a new design are well within our scope of work at ILT.

<b>Lampholders</b>	<b>39-49</b>	>
4 mm	40	
Universal	41	
5.3 mm	42	
6.35 mm	43-44	
Other	44-46	
Miniatures	46-48	
Mounting Clips	49	

Select the Lamp Best Suited To Your Application, Then Enter That Lamp's Part Number in the Search Box on the ILT Web Site Home Page (Upper Right Corner) To Order.  
[Link to ILT Home Page](#)

# LAMP HOLDERS

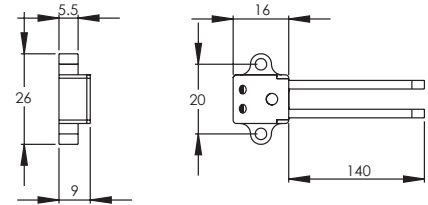
4mm base: G4<sup>1</sup>, GY4<sup>2</sup> GZ4<sup>3</sup>

**Key** (A) UL3122 – 200°C, Braided Silicon, 300V, white  
 (B) UL10362 – 250°C, PTFE, 600V, white  
 (C) 11596 – 18AWG, 180°C, Silicon, 300V, brown

**H971<sup>1,2,3</sup>**



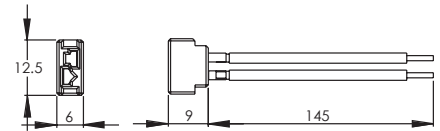
**Maximum ratings:** 250V, 6A, 250°C  
**Wire options:** M3&140mm (C), M3&220mm (C)



**H973<sup>1</sup>**



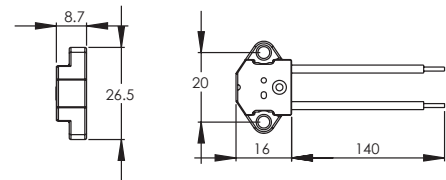
**Maximum ratings:** 24V, 4A, 180°C  
**Wire options:** 145mm (C), no wire



**H977<sup>1,2,3</sup>**



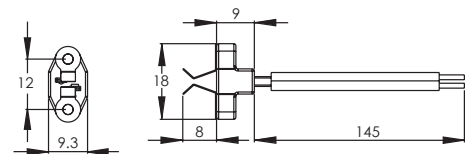
**Maximum ratings:** 250V, 10A, 350°C  
**Wire options:** 140mm (C), 395mm (C)



**H997<sup>1</sup>**



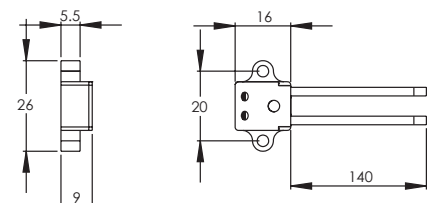
**Maximum ratings:** 24V, 4A, 180°C  
**Wire options:** 145mm (C)



**H9901<sup>1</sup>**



**Maximum ratings:** 250V, 100W, 4A, 200°C  
**Wire options:** 140mm (A), 180mm (A), 317mm (B)



Note: All dimensions are in mm

# LAMP HOLDERS

## Universal Base: 4/5.3/6.35

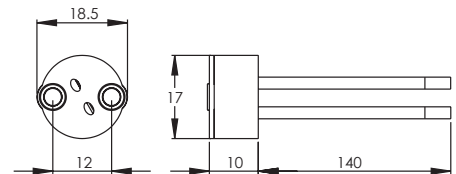
This includes all variations of these bases G, GU, GX, GY and GZ

- Key**
- Ⓐ UL3122 – 200°C, Braided Silicon, 300V, white
  - Ⓑ UL10362 – 250°C, PTFE, 600V, white
  - Ⓒ 11596 – 18AWG, 180°C, Silicon, 300V, brown

### H912



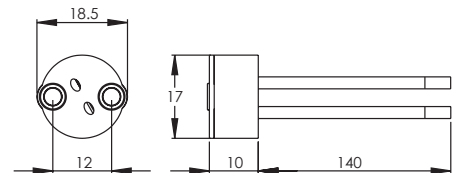
**Maximum ratings:** 50V, 10A, 250°C  
**Wire options:** 140mm Ⓑ, 460mm Ⓑ, M3&255mm Ⓒ



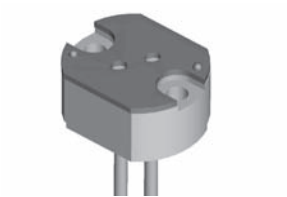
### HT456



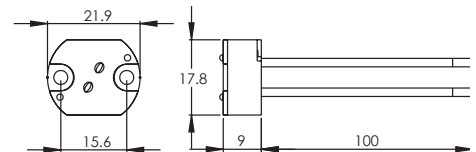
**Maximum ratings:** 50V, 10A, 200°C  
**Wire options:** 100mm Ⓐ, 220mm Ⓐ



### HT458



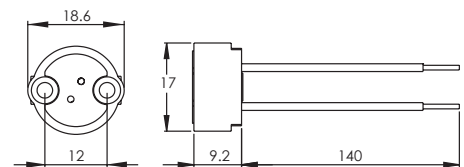
**Maximum ratings:** 25V, 100W, 200°C  
**Wire options:** 205mm Ⓐ, 460mm Ⓑ



### H9941



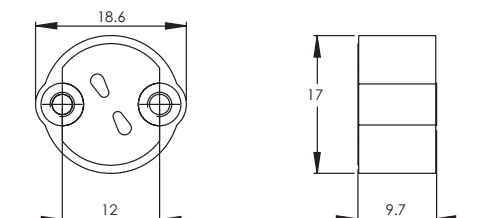
**Maximum ratings:** 50V, 10A, 250°C  
**Wire options:** 140mm Ⓑ



### HX814



**Maximum ratings:** 24V, 10A, 230°C  
**Wire options:** none



Note: All dimensions are in mm

# LAMP HOLDERS

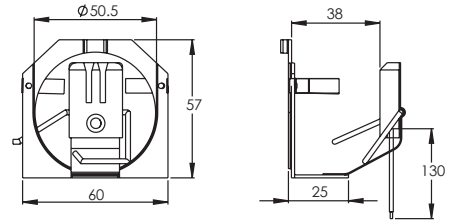
5.3mm base: G3.9<sup>1</sup>, G5.3<sup>2</sup>, GU5.3<sup>3</sup>, GX5.3<sup>4</sup>, G5.3-4.8<sup>5</sup> and GY5.3<sup>6</sup>

- Key**
- © 11596 – 18AWG, 180°C, Silicon, 300V, brown
  - Ⓓ 14731 – 18AWG, 250°C, PTFE, 300V, black
  - Ⓔ 11642 – 16AWG, 250°C, PTFE, 300V, blue
  - Ⓕ 11603 – 18AWG, 250°C, PTFE, 300V, transparent white

## H706<sup>3,4</sup>



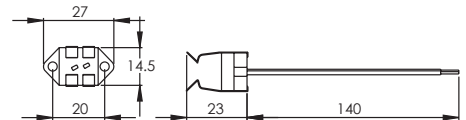
**Maximum ratings:** 250V, 10A, 250°C  
**Wire options:** 130mm ©



## H850<sup>3</sup>



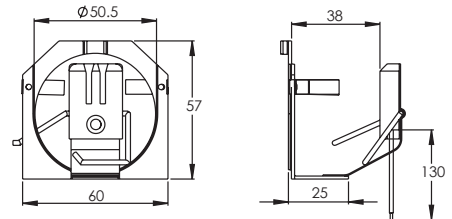
**Maximum ratings:** 12.5A, 350°C  
**Wire options:** 140mm ©, 510mm Ⓓ



## H867<sup>6</sup>



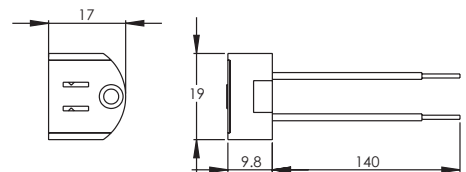
**Maximum ratings:** 250V, 10A, 250°C  
**Wire options:** 130mm ©



## H885<sup>5</sup>



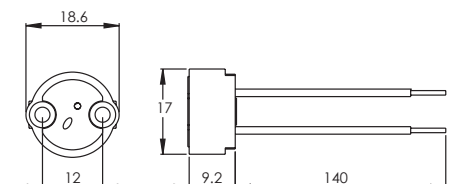
**Maximum ratings:** 250V, 10A, 250°C  
**Wire options:** 140mm ©



## H989<sup>1,2,3,4</sup>



**Maximum ratings:** 250V, 12.5A, 350°C  
**Wire options:** 140mm Ⓓ, M3&140mm Ⓕ, M3&395mm Ⓓ, 1000mm Ⓔ



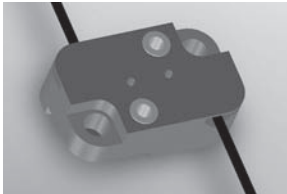
Note: All dimensions are in mm

# LAMP HOLDERS

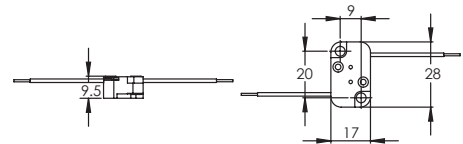
6.35mm base: G6.35<sup>1</sup>, GY6.35<sup>2</sup>, GX6.35<sup>3</sup>, GZ6.35<sup>4</sup>

**Key** © 11596 – 18AWG, 180°C, Silicon, 300V, brown  
 Ⓣ 14731 – 18AWG, 250°C, PTFE, 300V, black

## H7010A<sup>2</sup>



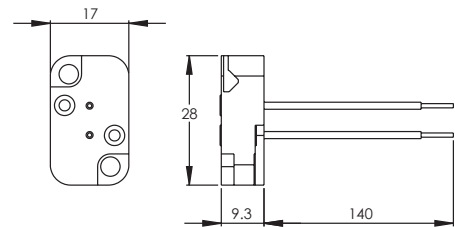
**Maximum ratings:** 250V, 12.5A, 350°C  
**Wire options:** 220mm Ⓣ



## H701A<sup>1,2,3,4</sup>



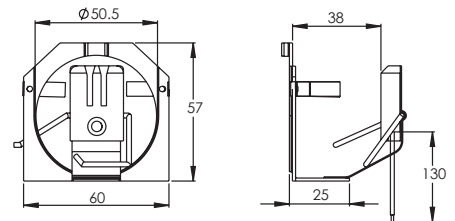
**Maximum ratings:** 250V, 12.5A, 350°C  
**Wire options:** 140mm Ⓣ



## H705<sup>4</sup>



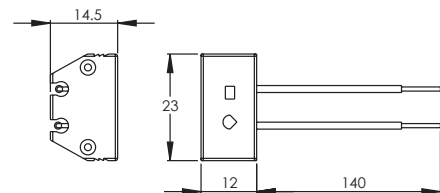
**Maximum ratings:** 250V, 10A, 250°C  
**Wire options:** 130mm Ⓣ



## H881<sup>1,4</sup>



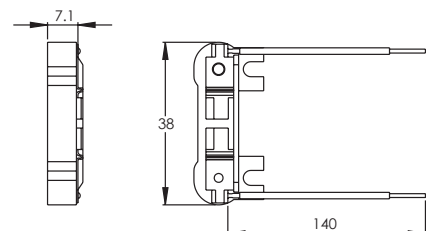
**Maximum ratings:** 250V, 12.5A, 250°C  
**Wire options:** 140mm ©



## H902<sup>1,2</sup>



**Maximum ratings:** 24V, 10A, 180°C  
**Wire options:** 140mm ©



Note: All dimensions are in mm

# LAMP HOLDERS

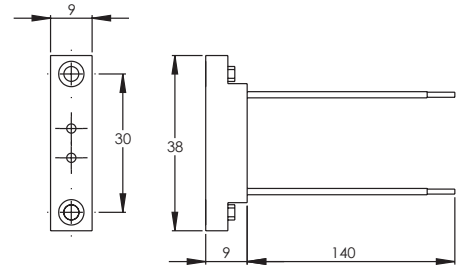
6.35mm base: G6.35<sup>1</sup>, GY6.35<sup>2</sup>, GX6.35<sup>3</sup>, GZ6.35<sup>4</sup>

**Key** © 11596 – 18AWG, 180°C, Silicon, 300V, brown  
 © 14731 – 18AWG, 250°C, PTFE, 300V, black

## H918<sup>1,2,3,4</sup>



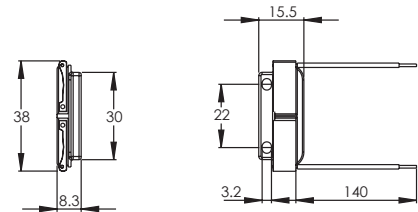
**Maximum ratings:** 250V, 6A, 250°C  
**Wire options:** 140mm Ⓣ, 460mm Ⓣ



## H998<sup>1,2</sup>



**Maximum ratings:** 24V, 10A, 180°C  
**Wire options:** 140mm ©, 395mm ©



## Reflector Holders

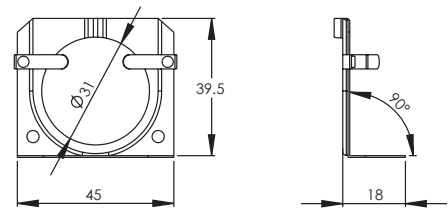
Reflector holders can be combined with any compatible lamp holder to give a reflector lamp more stability.

These are made from plated alloy steel

## H708



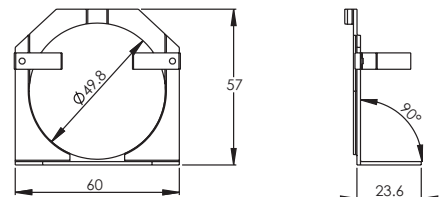
**Reflector:** MR11



## H707



**Reflector:** MR16



Note: All dimensions are in mm

# LAMP HOLDERS

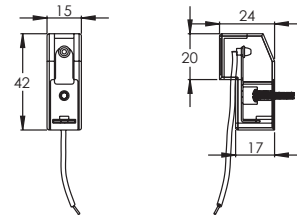
R7 base:

- Key**
- Ⓐ UL3122 – 200°C, Braided Silicon, 300V, white
  - Ⓔ 11642 – 16AWG, 250°C, PTFE, 300V, blue
  - Ⓗ ULSF216 – 16AWG, 200°C, Braided Silicon, 600V, white
  - Ⓘ 11636 – 16AWG, 180°C, Braided Silicon, 300V, white

**H9432**



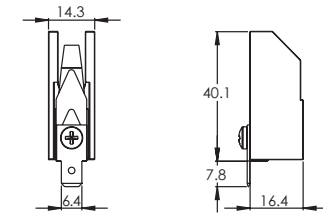
**Maximum ratings:** 250V, 500W, 200°C  
**Wire options:** 110mm Ⓐ



**H944**



**Maximum ratings:** 600V, 1500W, 350°C  
**Wire options:** None, 300mm Ⓗ, 580mm Ⓗ, 1210mm Ⓗ

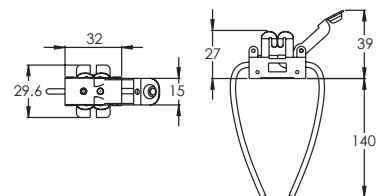


9.5mm base: GY9.5<sup>1</sup>, GZ9.5<sup>2</sup>

**H9971<sup>1,2</sup>**



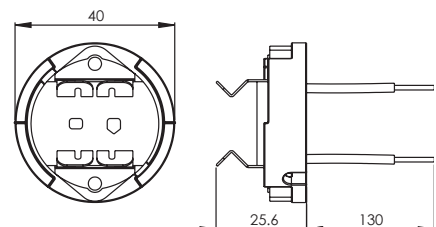
**Maximum ratings:** 500V, 10A, 250°C  
**Wire options:** 140mm Ⓘ



**H999<sup>1,2</sup>**



**Maximum ratings:** 300V, 10A, 250°C  
**Wire options:** 130mm Ⓔ



Note: All dimensions are in mm

# LAMP HOLDERS

Ba15 base: Ba15s<sup>1</sup>, Ba15d<sup>2</sup>

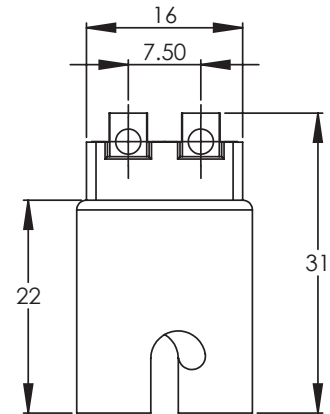
Key Ⓢ W-2844-19 – 28AWG, 200°C, PTFE, 250V, black

## H257<sup>1,2</sup>

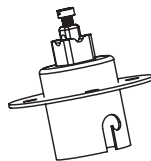


Maximum ratings: 250V, 10A, 250°C

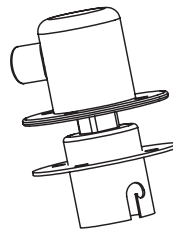
Wire options: none



H257 options: Standard



with flange



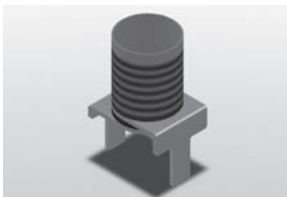
with silicone boot

## Miniature Lampholders

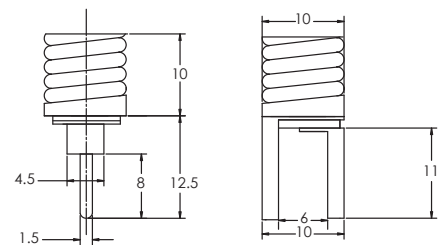
This is a collection of various lampholders that fit into the miniature range, i.e. the pin spacing is less than four mm.

### Screw

#### H110



Base type: E10



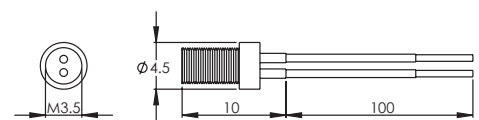
### BiPin

#### H127



Base type: G1.27/T1

Wire options: none, 100mm Ⓢ, 300mm Ⓢ



Note: All dimensions are in mm

# LAMP HOLDERS

## Miniature Lampholders

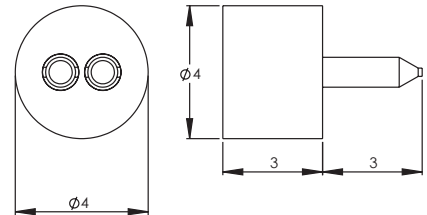
Key ① W-2844-19 – 28AWG, 200°C, PTFE, 250V, black

### BiPin

#### H716



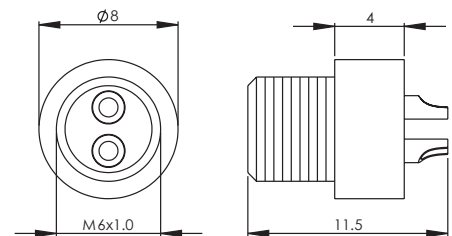
Base type: G1.27/T1



#### H250



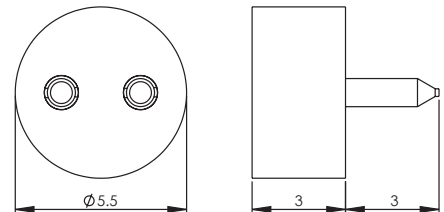
Base type: G2.54/T1¼  
Wire options: none, 150mm ①, 250mm ②



#### H714



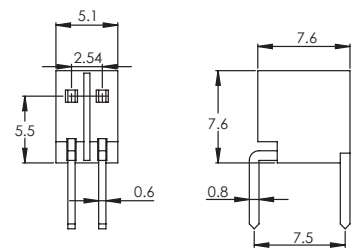
Base type: G2.54/T1¼



#### H719



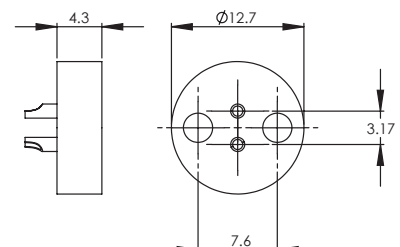
Base type: G2.54/T1¼



#### H720



Base type: G3.17/T1¾



Note: All dimensions are in mm

# LAMP HOLDERS

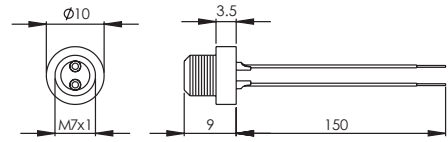
## Miniature Lampholders - BiPin

**Key** Ⓜ W-2844-19 – 28AWG, 200°C, PTFE, 250V, black  
 Ⓚ UL1015 – 18AWG, 105°C, PVC, 600V, black

### H320



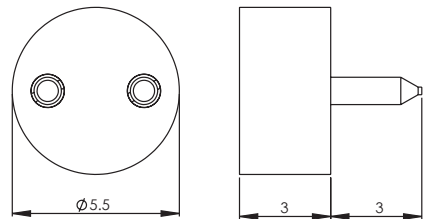
**Base type:** G3.17/T1¾  
**Wire options:** none, 150mm Ⓜ, 250mm Ⓚ



### H715



**Base type:** G3.17/T1¾

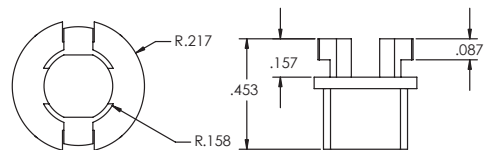


## Miniature Lampholders - Wedge

### H710A



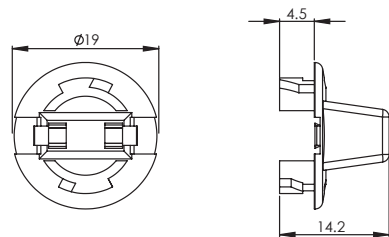
**Base type:** T3¼



### H711



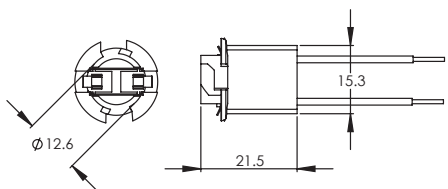
**Base type:** T3¼



### H718



**Base type:** T3¼  
**Wire options:** 200mm Ⓚ



Note: All dimensions are in mm

# LAMP HOLDERS

## Mounting Clips

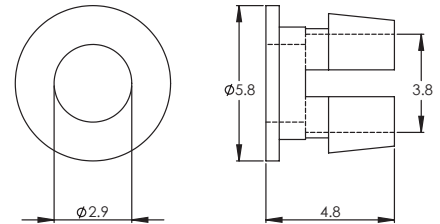
Mounting clips are used to hold a miniature lamp or a LED in a panel.

These are the grommets which the lamp fits into and have no contacts/lead wires attached.

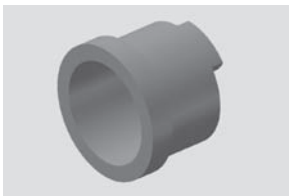
### H767



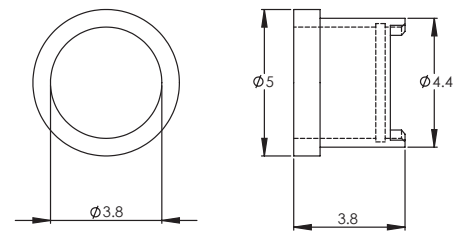
Lamp size: T1



### H772



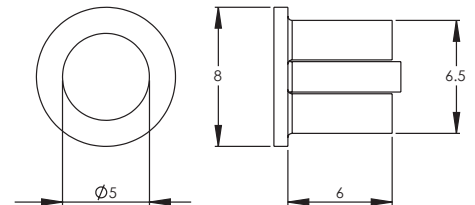
Lamp size: T1



### H768



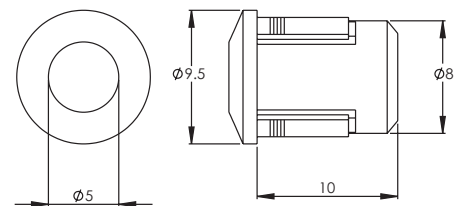
Lamp size: T1¾



### H769



Lamp size: T1¾



Note: All dimensions are in mm